

Positive Ecoworx S™ Tile

Stijlnummer	5T510	
Collectie	New Path	
Producttype	Tapijttegel	
Construction	Standard	Data + Performance
Type Fabricage	ISO 2424	tufted 1/10" 39.4 per 10cm
Uitzicht	ISO 2424	Multilevel-Patroonlus
Verfmethode	EN 994	100% In Oplossing Geverfd
Productformaat	EN 994	50 cm x 50 cm 20 tiles (5 m²) per box
Primaire Backing	ISO 2424	Pet Nonwoven
Secundaire Backing	ISO 2424	Ecoworx S™ Polyolefin Plastomer
Vezel	ISO 2424	Ecosolution Q100™ Polyamide 6 Bevat 100% Gerecycleerd Materiaal
Totale Dikte	ISO 1765	5.5 mm
Afgewerkte Pooldikte	ISO 1766	1.8 mm
Totale Massa	ISO 8543	2409 g/m²
Getuft Gewicht	ISO 2424	640 g/m²
Effectieve Poolmassa	ISO 8543	232 g/m²
Pooldichtheid	ISO 8543	0.124 g/cm³



Gegevens

Steken	ISO 1763	169,000/m² 43 per 10cm
Elektrostatische Weerstand	ISO 6356	≤ 2.0 kv (Stroll Test)
Gebruik Classificatie	EN 1307	33 Commercial Heavy
Luxe klasse	EN 1307	LC1
Dimensionale Stabiliteit	EN 986	≤ 0.2%
Contactgeluidsisolatie	ISO 10140	26 Db
Geluidsabsorptieclassificatie	ISO 354/11654	0.20 Aw Class E
Warmteweerstand m² K/w	ISO 8302	0.069 M² K/W Tog 0.69
Weerstand Tegen Droog Uitglijden	ISO 13893	Pass / No Pulled Loops
Kleurvastheid Voor Licht	ISO 105-B02	>6
Ontvlambaarheid	EN 13501-1	Bfl-S1 (Adhered Testing)
Stoel Met Wieltjes	EN 985	≥2.4 Continuous Use

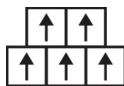
Aanbevolen Installatiemethode



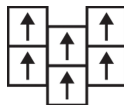
Monolithic



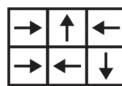
Quarter Turn



Brick



Ashlar



Random



26 dB

Corporate Headquarters +1 800 257 7429 | +1 706 532 7984 | Atlanta +1 404 853 7429 | Bengaluru +91 80 6773 0202 | Beijing +86 10 6568 588 | Chicago +1 312 467 1331 | Dubai +971 4 584 6956 | Hong Kong +852 2623 0371 | Latin America (Miami) +1 305 827 5912 | London +44 207 961 4120 | Los Angeles +1 800 233 1614 | Melbourne +61 3 9939 8543 | Mexico City +55 5010 7600 | Mumbai +91 22 6284 5050 | Nantong +86 400 800 7429 | New York +1 212 953 7429 | Paris +33 (0) 1 81 22 44 39 | San Francisco +1 415 955 1920 | Santiago +562 2431 5000 x 550 | São Paulo +55 11 3071 1702 | Shanghai +86 21 3338 4000 | Singapore +65 6733 1811 | Sydney +1 800 556 302

© 2024 Shaw Industries Group, Inc., a Berkshire Hathaway Company
May 18, 2024

22

EU.DOP/2895/CPR/1222/0323/EST

OOSTERHOUT SHOWROOM, VAARTWEG 10, 4905 BL NETHERLANDS (NLD)

Notified Body 2895

22

UK.DOP/0338/CPR/1222/0323/EST

SHAW EUROPE LIMITED BLACKADDIE RD, SANQUHAR DG4 6DB, UNITED KINGDOM

Approved Body 0338

EN14041:2004/AC:2006

For use as an indoor floor covering as specified by the manufacturer

Coördinerende Producten

Carpet Tile: **Upbeat Ecoworx S Tile, Poised Ecoworx S Tile**

Kenmerken + Certificeringen

Certifications Below Apply Exclusively To The Carpet Tile Rug Itself And Not The Lokworx Tabs Adhesive

Declaration of Performance	EU.DOP/2895/CPR/1222/0323/EST
Cradle to Cradle gecertificeerd™	Zilver Niveau (Versie 3.1)
Environmental Product Declaration (EPD)	3de Partij Gecertificeerd in Overeenstemming Met ISO14044, ISO14025 & EN15804
Embodied Carbon (Cradle to Gate)	4.14 kg CO₂/m²
Life-Cycle Carbon Emissions	Carbon Neutral
milieugarantie	Take Back Policy Offered For All Ecoworx S™ Products
land van herkomst	Verenigd Koninkrijk
BREEAM Contribution Credit	Certificate of Approval Schools/Offices/Health/Industrial Shed Retail

Well V2 Contribution Credit

X08 Hazardous Material Reduction Part 1: Limit Hazardous Materials Optimization	C2C Silver Level (Version 3.1)
X10 Volatile Compound Reduction Part 1 (A): Manage Volatile Organic Compounds (VOCs) Optimization	C2C Silver Level (Version 3.1)
X11 Long Term Emissions Control Part 2: Flooring Optimization	M1> Emissions Class For Building Material
X13 Enhanced Material Precaution Part 1: Select Optimized Materials Optimization	C2C Silver Level (Version 3.1)
X14 Material Transparency Part 1: Promote Ingredient Disclosure Optimization	C2C Silver Level (Version 3.1)

Groen Leed Bijdragekrediet

"MR-krediet: Openbaarmaking en optimalisering van bouwproducten Materiaalingrediënten - Optie 1: Rapportage materiaalingrediënten"	C2C Silver Level (Version 3.1)
"MR-krediet: openbaarmaking en optimalisering van bouwproducten Materiaalingrediënten - Optie 2: Optimalisering van materiaalingrediënten"	C2C Silver Level (Version 3.1)

Air Quality

Indoor Air Comfort Gold	Certified
M1	Certified

Memberships

WGBC Framework	WGBC Framework
UKGBC	UKGBC
Emirates Green Building Council	Emirates Green Building Council
Chemsec	Chemsec

Lichtreflectiewaarde



Bubbly 10100
LRV 31.9



Warmth 10101
LRV 33.8



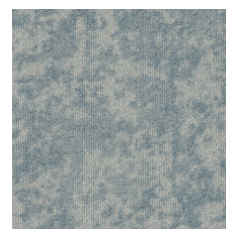
Optimistic 10210
LRV 26.3



Considered 10327
LRV 29.9



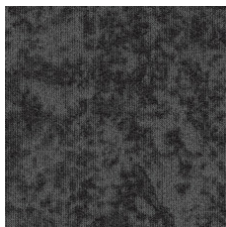
Observe 10375
LRV 9.5



Enthusiasm 10411
LRV 30.2



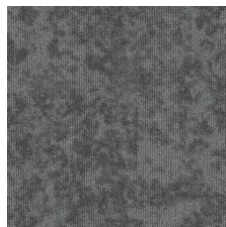
Confident 10480
LRV 11.8



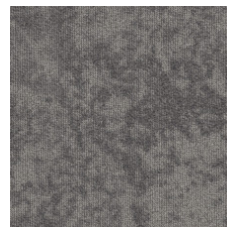
Contemplate 10500
LRV 7.3



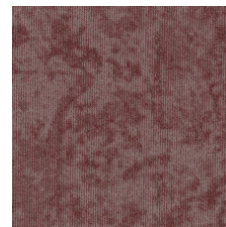
Satisfied 10515
LRV 16.5



Solace 10580
LRV 13.7



Grateful 10760
LRV 16.7



Cheeky 10870
LRV 12.1

Aanvullende Informatie

**Manufactured in ISO 9001 certified facility. Meets or exceeds all local and national regulations in country of manufacture.

[Installation Guidelines](#)

[Maintenance Guidelines](#)

[lifetime commercial limited](#)

Specifications are subject to nominal manufacturing variance. Material supply and/or manufacturing processes may necessitate changes without notice.

This product is an exclusive design and may not be duplicated in any manner. Use of this design in the creation of another product design is also strictly prohibited.

Visit shawcontract.com/testing for more information.



Corporate Headquarters +1 800 257 7429 | +1 706 532 7984 | Atlanta +1 404 853 7429 | Bengaluru +91 80 6773 0202 | Beijing +86 10 6568 588 | Chicago +1 312 467 1331 | Dubai +971 4 584 6956 | Hong Kong +852 2623 0371 | Latin America (Miami) +1 305 827 5912 | London +44 207 961 4120 | Los Angeles +1 800 233 1614 | Melbourne +61 3 9939 8543 | Mexico City +55 5010 7600 | Mumbai +91 22 6284 5050 | Nantong +86 400 800 7429 | New York +1 212 953 7429 | Paris +33 (0) 1 81 22 44 39 | San Francisco +1 415 955 1920 | Santiago +562 2431 5000 x 550 | São Paulo +55 11 3071 1702 | Shanghai +86 21 3338 4000 | Singapore +65 6733 1811 | Sydney +1 800 556 302

© 2024 Shaw Industries Group, Inc., a Berkshire Hathaway Company
May 18, 2024

3 of 3